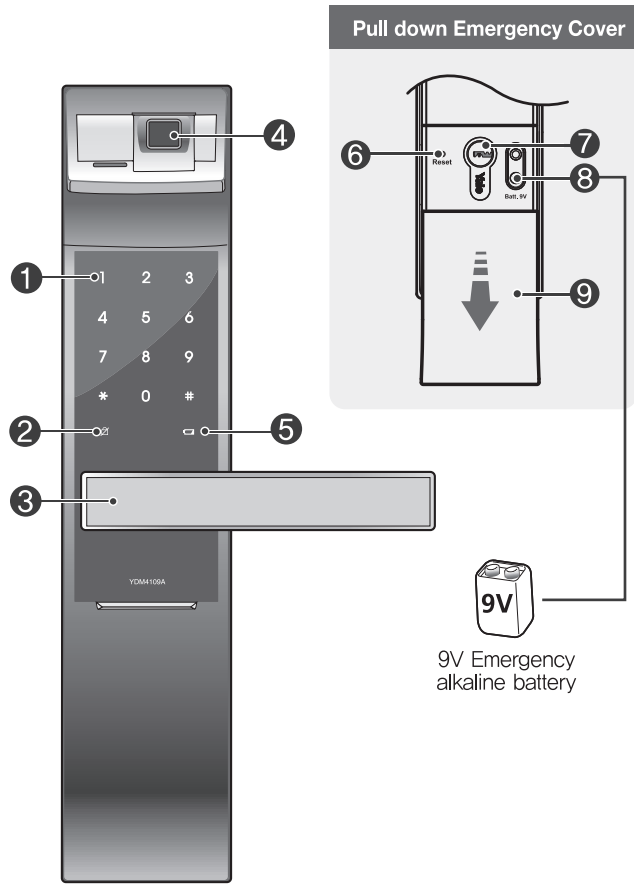
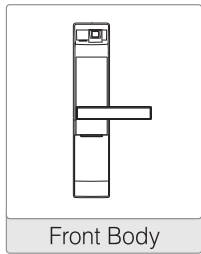


1. Front Body (Front Body, installation on the outside of the door)

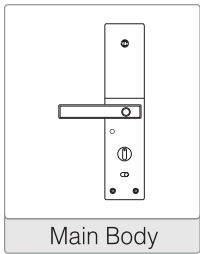


2. Basic Contents

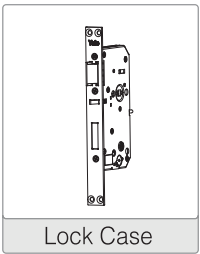
Basic Contents



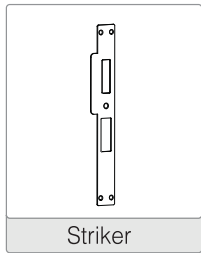
Front Body



Main Body



Lock Case



Striker

- User guide
- Installation guide
- 4ea AA Batteries
- 4ea Card Keys
- 2ea Mechanical Keys

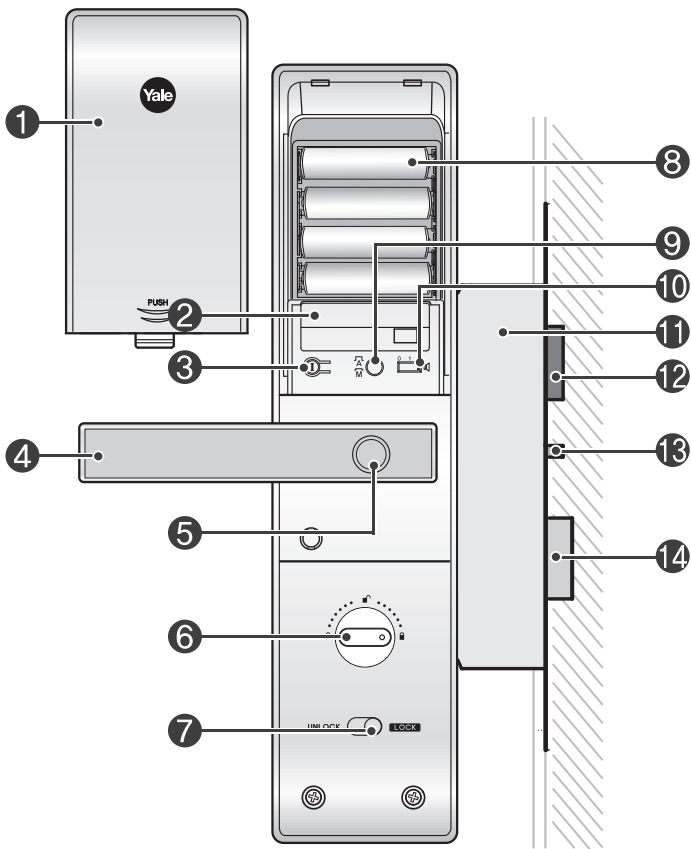
- Optional Accessories
- Remote Control
 - Remote Control Module
 - Z-wave module
 - Zigbee module
 - Bluetooth module

3. Specifications

| Parts | Specifications | Remarks |
|------------------|---|---|
| Front Body | 68.6(W) X 320.7(H) X 40.1(D) mm | Operating temperature -15~55°C (5~131°F) |
| Main Body | 72.8(W) X 306.6(H) X 37.0(D) mm | |
| Battery | 4EA 1.5V AA Alkaline batteries(Operating voltage: 4.5~6V) | |
| Optional product | Remote controller: wireless | |

※ Battery life may vary depending on temperature, moisture levels, frequency of use and the quality of the batteries.

4. Main Body (Main Body, installation on the inside of the door)



5. Front Body

| | |
|-----------------------|-----------------------------------|
| 1 Keypad | 2 Dead Bolt Jam Lamp |
| 3 Lever | 4 Fingerprint Sensor |
| 5 Battery Change Lamp | 6 Reset Button |
| 7 Emergency Key | 8 Emergency Power Supply Terminal |
| 9 Emergency Cover | |

6. Main Body

| | |
|-------------------------------|----------------------------------|
| 1 Battery Cover | 2 Slot for Remote control module |
| 3 ① Registration button | 4 Lever |
| 5 Safe Handle Button | 6 Manual Thumb Turn |
| 7 Internal Forced Lock Switch | 8 Batteries |
| 9 Auto/Manual Lock Button | 10 Volume Control Switch |
| 11 Lock Case | 12 Latch Bolt |
| 13 Automatic Locking Sensor | 14 Dead Bolt |

7. Setting Menu

Normal Mode: Without a designated person, anyone who knows 'User PIN Code' has authority to set features.

Master Code: Only a designated person who knows 'Master PIN Code' has authority to set features.

Visitor Code: The visitor code is different from user code and given out to visitors only.

Onetime Code: The onetime code is used only once for unlocking the door lock and automatically deleted after usage.

User Slot Number: It should be 2 digits(like '01', '02'...'99', '00') and available in advanced mode.

| | |
|--|--|
| | Touch the Keypad of the Front Body with your palm to begin |
| | Press button on the Keypad |
| | Press button on the Keypad |
| | Press (Registration) button in every steps to start or complete the session |
| | Enter User Fingerprint (Up to 100EA) |
| | Enter User Code (4 ~ 10 digits) |
| | Enter Master Code (4 ~ 10 digits) |
| | Enter Visitor Code (Only 4 digits) |
| | Enter Onetime Code (Only 4 digits) |
| | User Slot Number should be 2 digits (like '01' ... '99' and '00'; Location of 100th user slot must be assigned '00' instead of '100'.) |
| | Rotation area to add more features |

8. Product Features

3minute Lock Out Feature
After five(5) unsuccessful attempts at entering a invalid code or Cardkey, 3 minute Lock out mode will be activated.

Fake PIN Code
Security enhancement to enter any number before or after entering a password. With this function, user can reduce the anxiety of exposing passwords.

Smart pad
Convenient function that shows the operation of the door lock with 12 numbers and symbols on the number plate. It expresses various situations such as door opening, closing, and typing on a number plate.

Mechanical Key
When there is a problem such as forgotten security code electronic malfunction, the lock can be operated with mechanical key. You can lock and open the door by opening the case lid and turning the key.

Safe handle
There is a safety button embedded on the handle and user must press the button together with the handle to open the door.
The safety button prevents break-in attempt by drilling holes on the door, inserting string loops from outside and pulling the handle to open the lock.

Smart Etiquette
To enter pin codes on the keypad and open the door lock in silent mode.

Bluetooth
User can use various bluetooth functions using Yale access module after pairing & registering a smart phone with door lock installed to the Yale access app.

Network Module Setting (*Optional)
This setting becomes available through the Main Menu (9) and allows the lock to connect with the Controllers.

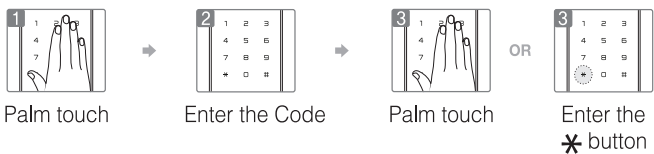
9. Quick Menu (Normal Mode)

Normal mode is a convenient mode for anyone to set the digital door lock. User can set password like user code, visitor code, onetime code and register user's fingerprints, card keys as well. Factory default is normal mode.

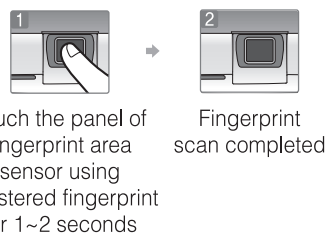
| | | | | | | | | | | | | |
|---|---------------------------|----------|--------|---|-------------------------|---|---------------|----|---|----|----|----|
| 1 | 12 (Registration process) | | | | * Continue / I Complete | | | | | | | |
| | 1 | 2 | 3 | 4 | 5 | 6 | 7 | 8 | 9 | 10 | 11 | 12 |
| User Code | | | | | | | | | | | | |
| Registr-ation | I | U New | I | | | | | | | | | |
| FingerprintUp to 100EA | | | | | | | | | | | | |
| Registr-ation | I | * | 8times | * | OR | I | | | | | | |
| Visitor Code | | | | | | | | | | | | |
| Registr-ation | U PIN CODE | I | 1 | # | V PIN CODE | # | * | OR | I | | | |
| Delete | | | 3 | # | U PIN CODE | # | * | OR | I | | | |
| Onetime CodeAutomatically deleted after use | | | | | | | | | | | | |
| Registr-ation | U PIN CODE | I | 2 | # | 1 | # | 0 PIN CODE | # | * | OR | I | |
| Delete | | | 3 | # | U PIN CODE | # | * | OR | I | | | |
| Delete all credentials | | | | | | | | | | | | |
| Delete all finger-print | U PIN CODE | I | 3 | # | U PIN CODE | # | * | OR | I | | | |

| | | | | | | | | | | | | | |
|--|---|---|---|---|---|---|---|-----------|-------------|---|----|----|---|
| DoorLock Setting: Language Setting | | | | | | | | | | | | | |
| Language Setting | | | | | | | 1 | Korean | # | * | OR | I | |
| | U | I | 4 | # | 5 | # | 2 | Chinese | # | * | OR | I | |
| | | | | | | | 3 | English | # | * | OR | I | |
| | | | | | | | 4 | Taiwanese | # | * | OR | I | |
| Remote Control | | | | | | | | | | | | | |
| Registration | | | | | | | 1 | # | SET Button | # | * | OR | I |
| Delete | U | I | 8 | # | | | 3 | # | U | # | * | OR | I |
| Controller | | | | | | | | | | | | | |
| Registration | | | | | | | 1 | # | Cont roller | # | * | OR | I |
| Delete | U | I | 9 | # | | | 3 | # | U | # | * | OR | I |
| <div><div></div><div></div><div></div><div></div><div></div><div></div><div></div><div></div><div></div><div></div><div></div><div></div><div></div><div></div><div></div><div></div><div></div><div></div><div></div><div></div><div></div><div></div><div></div><div></div><div></div><div></div><div></div><div></div><div></div><div></div><div></div><div></div><div></div><div></div><div></div><div></div><div></div><div></div><div></div><div></div><div></div><div></div><div></div><div></div><div></div><div></div><div></div><div></div><div></div><div></div><div></div><div></div><div></div><div></div><div></div><div></div><div></div><div></div><div></div><div></div><div></div><div></div><div></div><div></div><div></div><div></div><div></div><div></div><div></div><div></div><div></div><div></div><div></div><div></div><div></div><div></div><div></div><div></div><div></div><div></div><div></div><div></div><div></div><div></div><div></div><div></div><div></div><div></div><div></div><div></div><div></div><div></div><div></div><div></div><div></div><div></div><div></div><div></div><div></div><div></div><div></div><div></div><div></div><div></div><div></div><div></div><div></div><div></div><div></div><div></div><div></div><div></div><div></div><div></div><div></div><div></div><div></div><div></div><div></div><div></div><div></div><div></div><div></div><div></div><div></div><div></div><div></div><div></div><div></div><div></div><div></div><div></div><div></div><div></div><div></div><div></div><div></div><div></div><div></div><div></div><div></div><div></div><div></div><div></div><div></div><div></div><div></div><div></div><div></div><div></div><div></div><div></div><div></div><div></div><div></div><div></div><div></div><div></div><div></div><div></div><div></div><div></div><div></div><div></div><div></div><div></div><div></div><div></div><div></div><div></div><div></div><div></div><div></div><div></div><div></div><div></div><div></div><div></div><div></div><div></div><div></div><div></div><div></div><div></div><div></div><div></div><div></div><div></div><div></div><div></div><div></div><div></div><div></div><div></div><div></div><div></div><div></div><div></div><div></div><div></div><div></div><div></div><div></div><div></div><div></div><div></div><div></div><div></div><div></div><div></div><div></div><div></div><div></div><div></div><div></div><div></div><div></div><div></div><div></div><div></div><div></div><div></div><div></div><div></div><div></div><div></div><div></div><div></div><div></div><div></div><div></div><div></div><div></div><div></div><div></div><div></div><div></div><div></div><div></div><div></div><div></div><div></div><div></div><div></div><div></div><div></div><div></div><div></div><div></div><div></div><div></div><div></div><div></div><div></div><div></div><div></div><div></div><div></div><div></div><div></div><div></div><div></div><div></div><div></div><div></div><div></div><div></div><div></div><div></div><div></div><div></div><div></div><div></div><div></div><div></div><div></div><div></div><div></div><div></div><div></div><div></div><div></div><div></div><div></div><div></div><div></div><div></div><div></div><div></div><div></div><div></div><div></div><div></div><div></div><div></div><div></div><div></div><div></div><div></div><div></div><div></div><div></div><div></div><div></div><div></div><div></div><div></div><div></div><div></div><div></div><div></div><div></div><div></div><div></div><div></div><div></div><div></div><div></div><div></div><div></div><div></div><div></div><div></div><div></div><div></div><div></div><div></div><div></div><div></div><div></div><div></div><div></div><div></div><div></div><div></div><div></div><div></div><div></div><div></div><div></div><div></div><div></div><div></div><div></div><div></div><div></div><div></div><div></div><div></div><div></div><div></div><div></div><div></div><div></div><div></div><div></div><div></div><div></div><div></div><div></div><div></div><div></div><div></div><div></div><div></div><div></div><div></div><div></div><div></div><div></div><div></div><div></div><div></div><div></div><div></div><div></div><div></div><div></div><div></div><div></div><div></div><div></div><div></div><div></div><div></div><div></div><div></div><div></div><div></div><div></div><div></div><div></div><div></div><div></div><div></div><div></div><div></div><div></div><div></div><div></div><div></div><div></div><div></div><div></div><div></div><div></div><div></div><div></div><div></div><div></div><div></div><div></div><div></div><div></div><div></div><div></div><div></div><div></div><div></div><div></div><div></div><div></div><div></div><div></div><div></div><div></div><div></div><div></div><div></div><div></div><div></div><div></div><div></div><div></div><div></div><div></div><div></div><div></div><div></div><div></div><div></div><div></div><div></div><div></div><div></div><div></div><div></div><div></div><div></div><div></div><div></div><div></div><div></div><div></div><div></div><div></div><div></div><div></div><div></div><div></div><div></div><div></div><div></div><div></div><div></div><div></div><div></div><div></div><div></div><div></div><div></div><div></div><div></div><div></div><div></div><div></div><div></div><div></div><div></div><div></div><div></div><div></div><div></div><div></div><div></div><div></div><div></div><div></div><div></div><div></div><div></div><div></div><div></div><div></div><div></div><div></div><div></div><div></div><div></div><div></div><div></div><div></div><div></div><div></div><div></div><div></div><div></div><div></div><div></div><div></div><div></div><div></div><div></div><div></div><div></div><div></div><div></div><div></div><div></div><div></div><div></div><div></div><div></div><div></div><div></div><div></div><div></div><div></div><div></div><div></div><div></div><div></div><div></div><div></div><div></div><div></div><div></div><div></div><div></div><div></div><div></div><div></div><div></div><div></div><div></div><div></div><div></div><div></div><div></div><div></div><div></div><div></div><div></div><div></div><div></div><div></div><div></div><div></div><div></div><div></div><div></div><div></div><div></div><div></div><div></div><div></div><div></div><div></div><div></div><div></div><div></div><div></div><div></div><div></div><div></div><div></div><div></div><div></div><div></div><div></div><div></div><div></div><div></div><div></div><div></div><div></div><div></div><div></div><div></div><div></div><div></div><div></div><div></div><div></div><div></div><div></div><div></div><div></div><div></div><div></div><div></div><div></div><div></div><div></div><div></div><div></div><div></div><div></div><div></div><div></div><div></div><div></div><div></div><div></div><div></div><div></div><div></div><div></div><div></div><div></div><div></div><div></div><div></div><div></div><div></div><div></div><div></div><div></div><div></div><div></div><div></div><div></div><div></div><div></div><div></div><div></div><div></div><div></div><div></div><div></div><div></div><div></div><div></div><div></div><div></div><div></div><div></div><div></div><div></div><div></div><div></div><div></div><div></div><div></div><div></div><div></div><div></div><div></div><div></div><div></div><div></div><div></div><div></div><div></div><div></div><div></div><div></div><div></div><div></div><div></div><div></div><div></div><div></div><div></div><div></div><div></div><div></div><div></div><div></div><div></div><div></div><div></div><div></div><div></div><div></div><div></div><div></div><div></div><div></div><div></div><div></div><div></div><div></div><div></div><div></div><div></div><div></div><div></div><div></div><div></div><div></div><div></div><div></div><div></div><div></div><div></div><div></div><div></div><div></div><div></div><div></div><div></div><div></div><div></div><div></div><div></div><div></div><div></div><div></div><div></div><div></div><div></div><div></div><div></div><div></div><div></div><div></div><div></div><div></div><div></div><div></div><div></div><div></div><div></div><div></div><div></div><div></div><div></div><div></div><div></div><div></div><div></div><div></div><div></div><div></div><div></div><div></div><div></div><div></div><div></div><div></div><div></div><div></div><div></div><div></div><div></div><div></div><div></div><div></div><div></div><div></div><div></div><div></div><div></div><div></div><div></div><div></div><div></div><div></div><div></div><div></div><div></div><div></div><div></div><div></div><div></div><div></div><div></div><div></div><div></div><div></div><div></div><div></div><div></div><div></div><div></div><div></div><div></div><div></div><div></div><div></div><div></div><div></div><div></div><div></div><div></div><div></div><div></div><div></div><div></div><div></div><div></div><div></div><div></div><div></div><div></div><div></div><div></div><div></div><div></div><div></div><div></div><div></div><div></div><div></div><div></div><div></div><div></div><div></div><div></div><div></div><div></div><div></div><div></div><div></div><div></div><div></div><div></div><div></div><div></div><div></div><div></div><div></div><div></div><div></div><div></div><div></div><div></div><div></div><div></div><div></div><div></div><div></div><div></div><div></div><div></div><div></div><div></div><div></div><div></div><div></div><div></div><div></div><div></div><div></div><div></div><div></div><div></div><div></div><div></div><div></div><div></div><div></div><div></div><div></div><div></div><div></div><div></div><div></div><div></div><div></div><div></div><div></div><div></div><div></div><div></div><div></div><div></div><div></div><div></div><div></div><div></div><div></div><div></div><div></div><div></div><div></div><div></div><div></div><div></div><div></div><div></div><div></div><div></div><div></div><div></div><div></div><div></div><div></div><div></div><div></div><div></div><div></div><div></div><div></div><div></div><div></div><div></div><div></div><div></div><div></div><div></div><div></div><div></div><div></div><div></div><div></div><div></div><div></div><div></div><div></div><div></div><div></div><div></div><div></div><div></div><div></div><div></div><div></div><div></div><div></div><div></div><div></div><div></div><div></div><div></div><div></div><div></div><div></div><div></div><div></div><div></div><div></div><div></div><div></div><div></div><div></div><div></div><div></div><div></div><div></div><div></div><div></div><div></div><div></div><div></div><div></div><div></div><div></div><div></div><div></div><div></div><div></div><div></div><div></div><div></div><div></div><div></div><div></div><div></div><div></div><div></div><div></div><div></div><div></div><div></div><div></div><div></div><div></div><div></div><div></div><div></div><div></div><div></div><div></div><div></div><div></div><div></div><div></div><div></div><div></div><div></div><div></div><</div> | | | | | | | | | | | | | |

10. Unlocking Door with Code

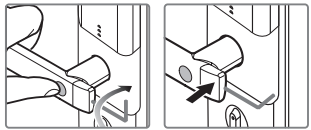


11. Unlocking Door with Fingerprint

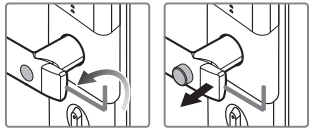


12. Safe Handle Feature

To release Safe Handle Setting

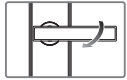


To set Safe Handle

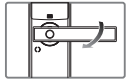


13. Opening Door(Inside/Outside)

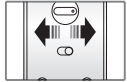
From Outside



From Inside



Internal Forced Lock



14. Unlocking Door with Smart Etiquette



15. Locking the Door(Inside/Outside)



Automatic Lock Mode(Inside/Outside)
In automatic lock mode, the lock automatically locked within 5 seconds after closing the door and detecting the automatic lock sensor.



The door locks when touching the keypad with the palm. (outside)



Use Thumb turn knob on the main body. (Inside)

Automatic Lock Setting
 Release the button to set automatic lock mode on the main-body (after opening the battery cover)

Manual Lock Setting
 Press the button to set manual lock mode on the main-body.

The diagram illustrates the two-step authentication process for the proposed system. It shows two alternative sequences of actions:

- Sequence 1:** Palm touch → Enter the user code and fake code.
- Sequence 2:** Enter the Fake Code and User code → Palm touch.

The sequences are separated by the word "OR", indicating that either method can be used for authentication.

External Forced Lock Setting-Fingerprint
 Scan with registered Fingerprint and hold the fingerprint area until you hear 3 beep sounds.

Palm touch Enter the Enter the #
User PIN Code button for 5 Sec.

When the door is unlocked from outside based upon proper authentication, the External forced lock will be released.

The operation sound volume will be adjusted according to the Volume Switch setting.

0 1 2: High

0 1 2: Low

0 1 2: Mute



After 5 unsuccessful attempts at entering a invalid code or Fingerprint,
3-minute Lock out mode will be activated

- 1 Open with inside door bar
- 2 Open the door with mechanical key
- 3 Press **I** button

Intrusion/Damage alarm

Break in Alarm : The alarm will be activated if someone forces to open the door when the door is locked.

Damage Alarm : The alarm will be activated if IN and/or OUT side of a door lock is physically damaged by any other forces.

- ❶ Enter the registered User Code.
- ❷ Press the **(I)** button for 5 seconds.
- ❸ Enter the registered Fingerprint.
- ❹ Touch the registered Card key .

Replace 9V Batteries Palm touch OR Scan Fingerprint

One-on-one real life size
1.5V(LR6) Alkaline AA Battery

You must replace all 4 batteries in the following cases:

- * The Low Battery LED on keypad flickers red.
- * When low battery notification message is played.

RISK OF EXPLOSION IF BATTERY IS REPLACED BY AN INCORRECT TYPE. DISPOSE OF USED BATTERIES ACCORDING TO THE NATIONAL CODE OR RECYCLING PROGRAM.

[illegible]

Master mode is a mode in which only the administrator can set the door lock and provide access to other users. 100ea user passwords, 100ea card keys, 100ea Fingerprint and individual registration and deletion of one-time passwords enable efficient management of visitors.

1

→

14 (Registration process)

✱ Continue / ① Complete

| | | | | | | | | | | | | | | |
|--|---|---|---|---|---|---|---|---|---|----|----|----|----|----|
| | 1 | 2 | 3 | 4 | 5 | 6 | 7 | 8 | 9 | 10 | 11 | 12 | 13 | 14 |
|--|---|---|---|---|---|---|---|---|---|----|----|----|----|----|

Switch to master mode (from normal mode)

Change Mode

U

①

4

#

1

#

M

#

M

①

New

Again

Master Pin Code Change

Registration

M

①

1

#

M

#

M

#

*

OR

①

New

Again

User Code

UN 01-99, 00: Location of 100th user slot must be assigned '00' instead of '100'

Registration

M

①

2

#

1

#

UN

#

U

#

*

OR

①

Delete

3

#

UN

#

*

OR

①

Fingerprint

Up to 100EA

Registration

M

①

3

#

1

#

UN

#

8times

*

OR

①

Delete

3

#

UN

#

*

OR

①

Overtime Code

Automatically deleted after use

Registration

M

①

4

#

1

#

O

#

*

OR

①

Delete

3

#

M

#

*

OR

①

Delete all credentials

Registration

M

①

5

#

M

#

*

OR

①

| | | | | | | | | | | | | |
|------------------|---|---|---|---|---|---|---|-----------|---|---|----|---|
| Language Setting | M | I | 6 | # | 5 | # | 1 | Korean | # | * | OR | I |
| | | | | | | | 2 | Chinese | # | * | OR | I |
| | | | | | | | 3 | English | # | * | OR | I |
| | | | | | | | 4 | Taiwanese | # | * | OR | I |

Bluetooth setting (Yale Access app)

| | | | | | | | | | | | | |
|--------------|---|---|---|---|--------------------------------|--|--|--|--|--|--|--|
| Registration | M | I | 7 | # | Set up a new device in the app | | | | | | | |
|--------------|---|---|---|---|--------------------------------|--|--|--|--|--|--|--|

Remote Control Up to 5EA

| | | | | | | | | | | | | | |
|--------------|---|---|---|---|---|---|----|---|------------|----|---|----|---|
| Registration | M | I | 8 | # | 1 | # | UN | # | SET Button | # | * | OR | I |
| Delete | | | | | 3 | # | UN | # | * | OR | I | | |

Controller

| | | | | | | | | | | | |
|--------------|---|---|---|---|---|---|-------------|---|---|----|---|
| Registration | M | I | 9 | # | 1 | # | Cont roller | # | * | OR | I |
| Delete | | | | | 3 | # | M | # | * | OR | I |

Switch to normal mode (from master mode)

| | | | | | | | | | | | |
|-------------|---|---|---|---|---|---|----|-----|----|-------|---|
| Change Mode | M | I | 6 | # | 1 | # | U | # | U | # | I |
| | | | | | | | UN | New | UN | Again | |

- ※ **Voice guidance function**
The lock provides voice guidance for user and it will be helpful to set up lock's features correctly.
- ※ **All registered passwords, card keys, and fingerprints can be deleted at the time of mode change.**
- ※ **Please install(register) the network module when you want to use a remote control or home network.**

The image contains four square panels, each with a black border, illustrating specific warnings for the digital door lock. Each panel features a vertical digital door lock with a keypad and a horizontal handle.

- Top Left:** Shows the lock next to a cloud with rain falling from it, indicating it should not be installed outdoors.
- Top Right:** Shows the lock next to a circular prohibition sign containing a screwdriver and a wrench, indicating it should not be disassembled by the user.
- Bottom Left:** Shows the lock next to a circular prohibition sign containing two bottles labeled 'Gasoline' and 'Benzene', indicating that these substances should not be used to clean the product.
- Bottom Right:** Shows the lock with a hammer and a chisel positioned to strike the handle, indicating that force should not be applied with tools.

When using, remember that someone else can see the password.

Make sure to lock the door tight when you go out.

| | |
|---|--|
| In case the batteries are completely discharged 9V battery can be used to supply electricity. | Keep the door lock touch screen clean with a dry, soft cloth and check for foreign substances. |
|---|--|

| | |
|---|--|
| In case the batteries are completely discharged 9V battery can be used to supply electricity. | Keep the door lock touch screen clean with a dry, soft cloth and check for foreign substances. Do not use a touch screen with wet hands. |
|---|--|



User Guide

YDM4109A

Fingerprint type

An ASSA ABLOY Group brand

ASSA ABLOY

- Do not install the digital door lock in an outdoor environment.
- Do not attempt to disassemble the digital door lock by yourself. By doing so, you may get an electronic shock and give damage the product.
- Do not use force with a tool onto the product.
- Make sure to lock the door tight when you go out.
- Be careful not to hit the handle as it may cause injuries.
- Do not use water and any type of solvent to clean the product such as gasoline or benzene as they can cause damage to electronic circuit, deterioration and or paint peel-off.
- It is recommended to change User Code on a regular basis.
- In manual lock mode, make sure to double check whether the door is securely locked.
- When External Forced lock is set and unlock the door, the alarm will be activated.
- Do not use rechargeable batteries. Only alkaline batteries are recommended.
- Make sure to follow the above instructions to avoid any injuries.
- It cannot be guaranteed in a special conditions & environment such as water condensation, seaside.